



## Hospital Response to Civil Unrest

### Pre-Checklist

(Emergency Preparedness Coordinator)

#### PRE-CHECKLIST STEPS

- Identify and Understand current circumstances and possibilities
  - *See appendix B – Key definitions*
- Institute Hospital Incident Command System (H.I.C.S.)
  - *See appendix A – H.I.C.S. structure*
- Assign key positions within the Incident Command tier
  - Identify P.I.O (Public Information Officer)
- Ensure that Hospital staff is aware of the establishment of I.C.
- Identify applicable E.O.P (Emergency Operation Plans)
  - Ensure understanding of each within Command
    - Mass Casualty Plans
    - Armed Intruder Plans
    - Media Relations Plans
    - Haz Mat Plans
- Identify Key assignments and who is responsible for each
  - Communication
    - Internal - Staff, Patient, Visitor
      - In house notifications
      - Off site notifications



## PRE-CHECKLIST STEPS

- External – Media, Community
  - Identify what information will be released
  - Initial Press Release
  - Identify Media Staging Area
    - Will Media be allowed on Property, In rooms, etc
- Establish contact with First Responders
  - Law Enforcement
  - Emergency Medical
- Social Media Considerations
- Access Control (Facility)
  - R.A.L.M. (Restrict Access/Limit Mobility)
    - “Lock Down” facility – If applicable
      - Specifically Task “Lock Down” responsibility
      - Ensure that facility remains secure
  - Notification of staff of entry points
  - Provide “way-finding”
- Triage
  - Identify Triage area away from Emergency Department (E.D.)
  - Identify Decontamination areas (Away from E.D. if possible)
  - Identify “tracking” method to ensure patients, staff, visitor accountability

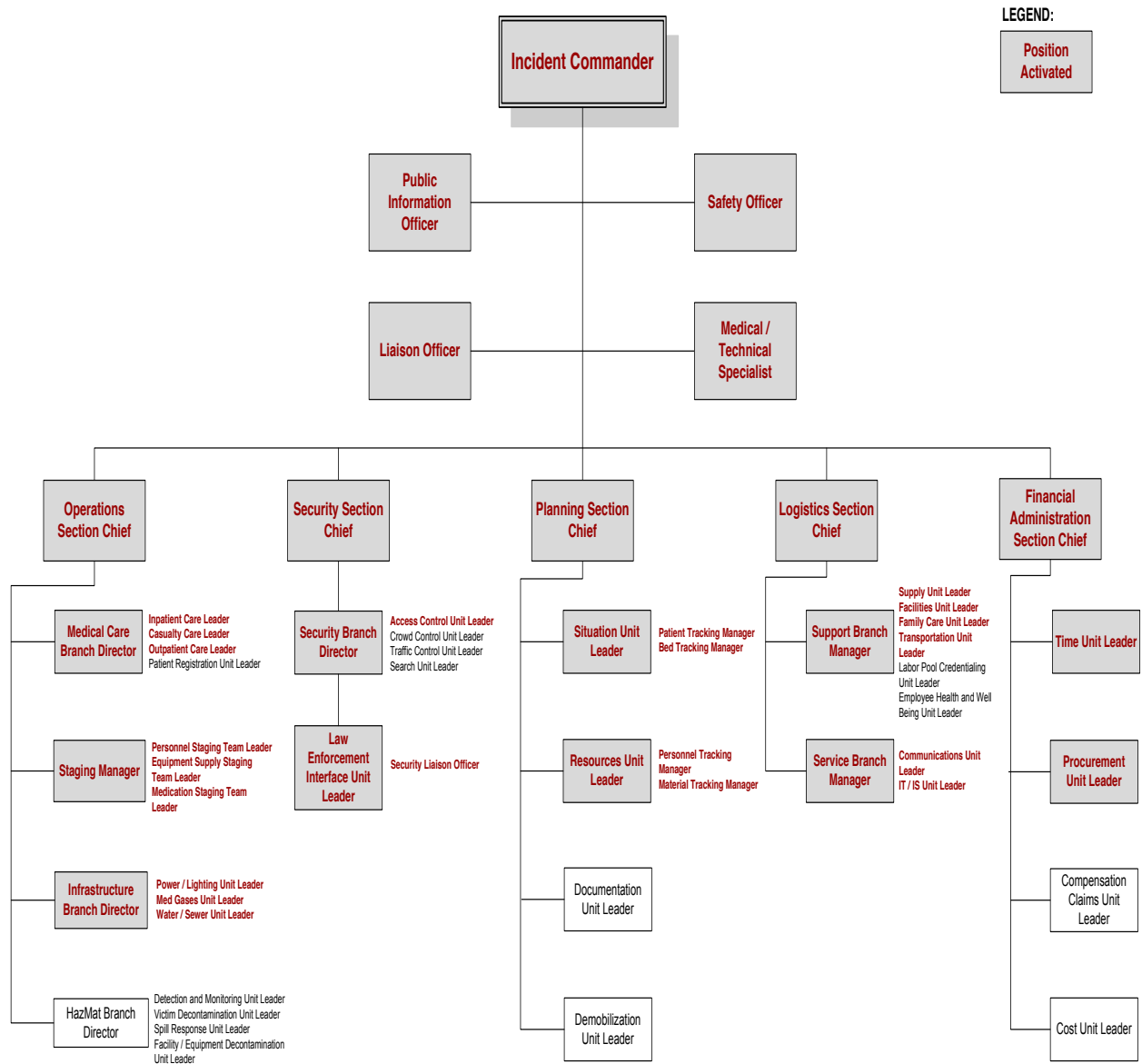


## PRE-CHECKLIST STEPS

- Patient Considerations
  - First Responders
  - Protestors
  - Persons of Notoriety
  - Patient related to officer involved shooting
- Staffing
  - Immediately identify available staff
    - Identify anticipated needs
  - Initiate “call back” “call in” protocol
    - Identify “safe routs” to and from facility
  - Identify transportation needs and solutions
  - Identify lodging needs if applicable
    - Food, childcare, etc.
    - Identify transportation needs and solutions
- Logistics
  - Identify Resource Needs
    - Additional Staff Considerations
    - Additional Visitor Considerations
    - Food, linens, housing issues
  - Delivery of goods issues
  - Identify “safe routes” to and from facility and relay such
- Ensure regular updates are provided to Patients, Visitors, and Staff
- Ensure regular briefings occur to identify appropriate decisions



## APPENDIX A



Hospital Response to Civil Unrest



## APPENDIX B

### Hospital Response to Civil Unrest Pre-Checklist

(Emergency Preparedness Coordinator)

#### Key Definitions

##### Civil Unrest

- 1- Involves a disruption of the typical social order, conducted in a legal manner.
- 2- Can involve various forms of protest, is peaceful and nonviolent.
- 3- Civil unrest often occurs when a group strives to gain attention for something they feel is unjust.

##### Civil Disobedience

- 1- Involves a disruption of the typical social order, conducted in an illegal manner.
- 2- Can involve various forms of protest, and is nonviolent.
- 3- Civil disobedience often occurs when a group strives to gain attention for something they feel is unjust.

##### Civil Disorder

- 1- Involves a disruption of the typical social order, conducted in an illegal manner.
- 2- Can involve various forms of protest, includes violence.
- 3- Civil disorder often occurs when a group strives to gain attention for something they feel is unjust.